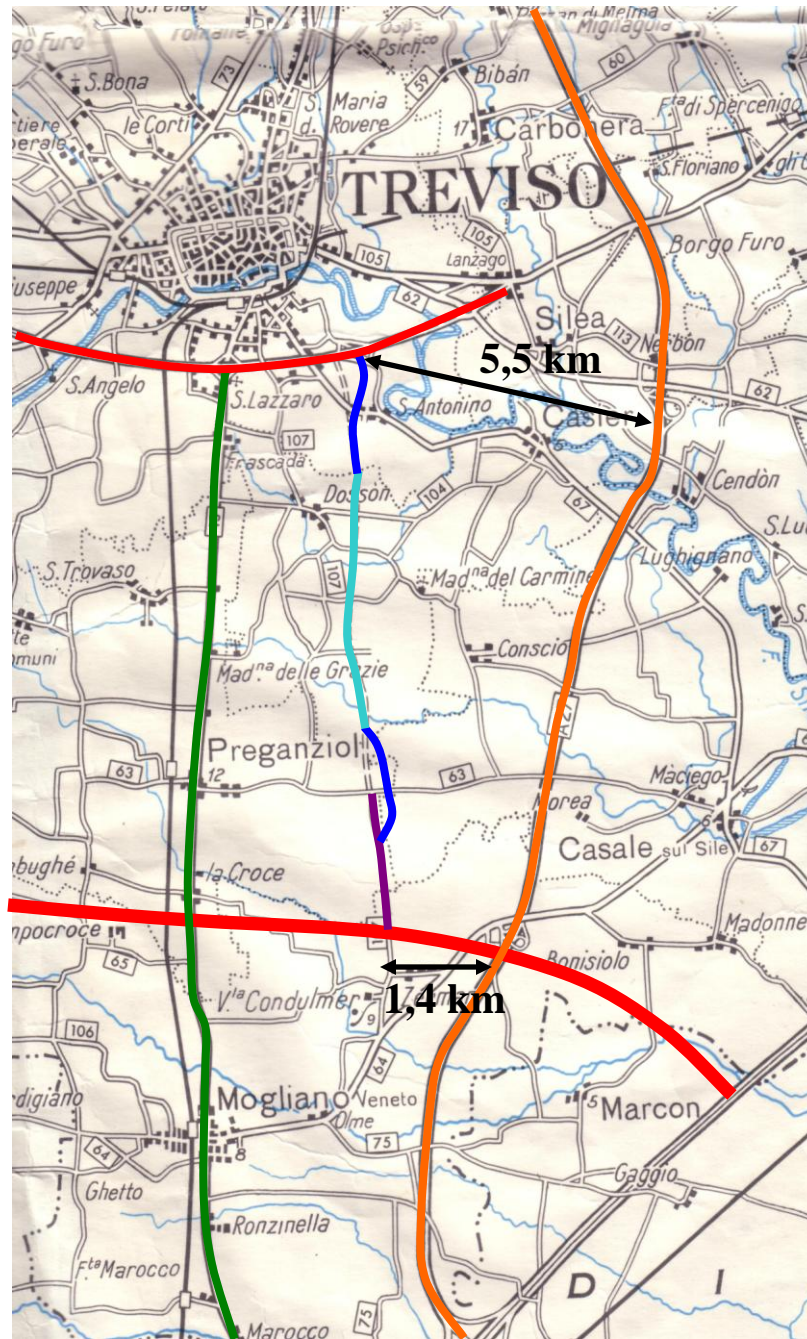
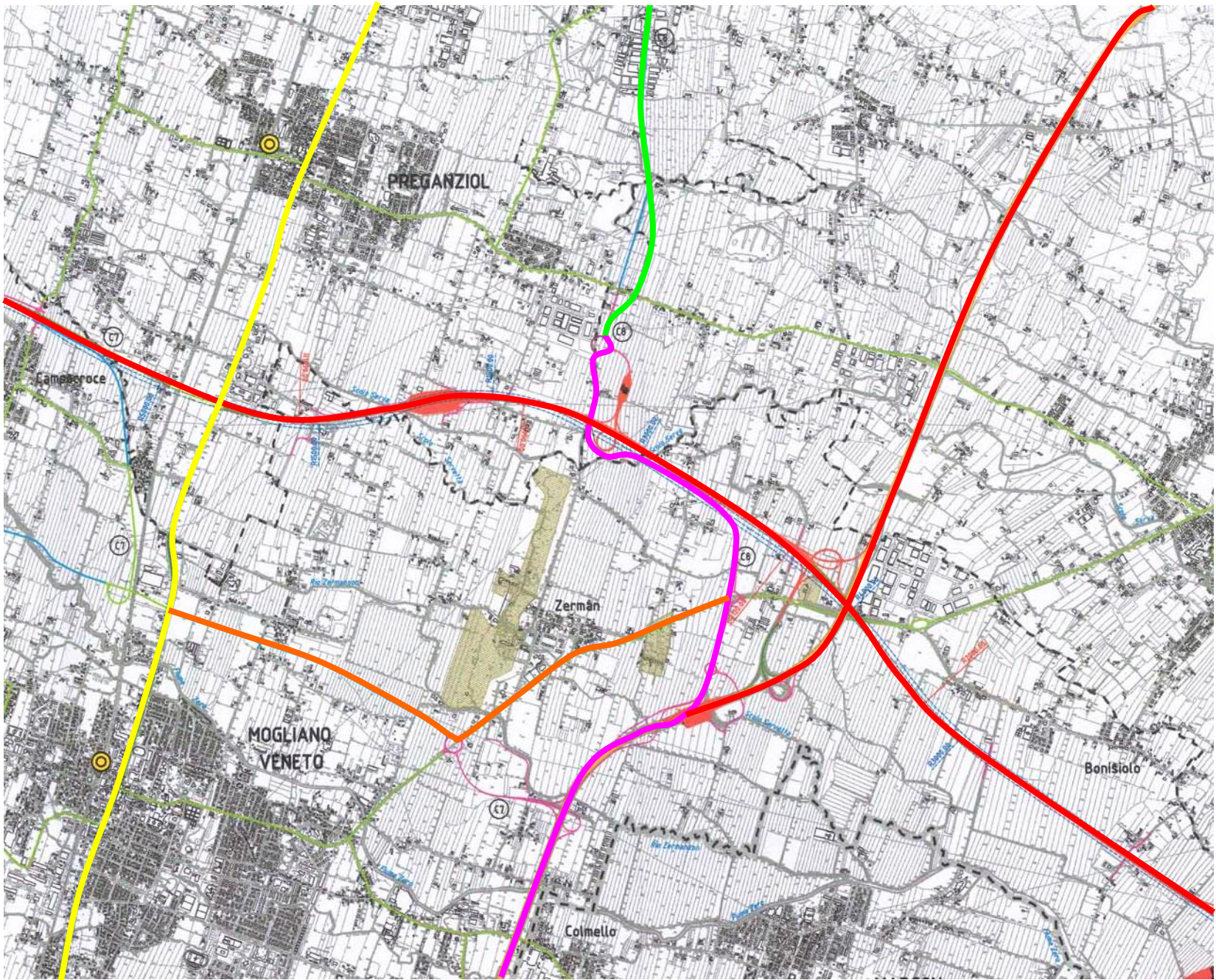


S.ANTONINO
25 GENNAIO 2007

**TERRAGLIO EST,
PROGETTO
PRELIMINARE**





An aerial photograph of a rural landscape with a patchwork of fields and some buildings. A blue line with yellow circular markers runs vertically on the left side. A red line segment is located at the top and bottom of this blue line. An orange line runs vertically on the right side. A yellow line runs horizontally across the bottom. Three green text boxes are overlaid on the map, each containing technical specifications.

SOTTOPASSO 100 M, TRINCEA 570 M

SOTTOPASSO 180 M, TRINCEA 730 M

SOTTOPASSO 15 M, TRINCEA 470 M

LUNGHEZZA 6,4 KM

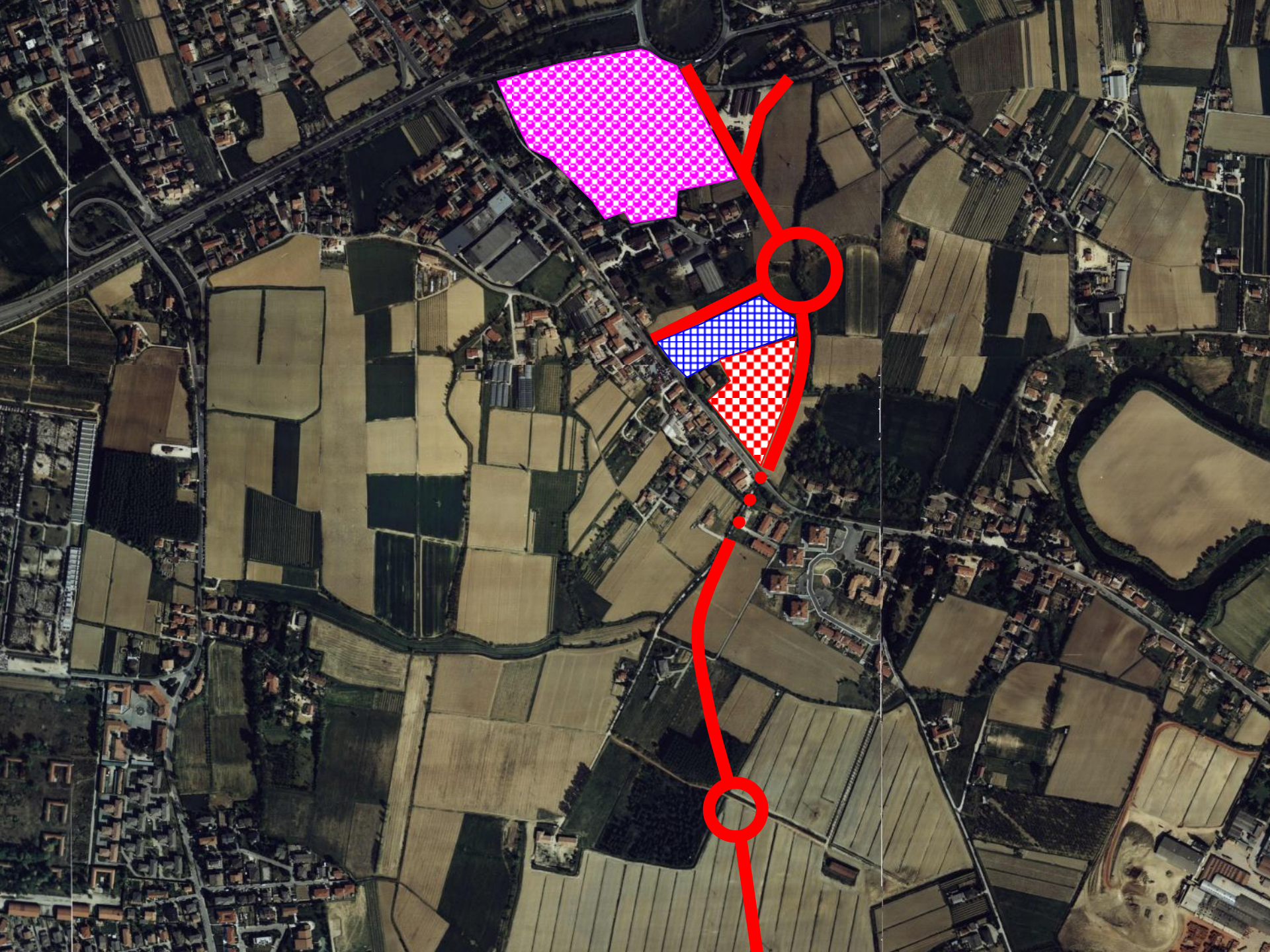
1 SVINCOLO

6 ROTATORIE A RASO + 1 DI SUPERAMENTO

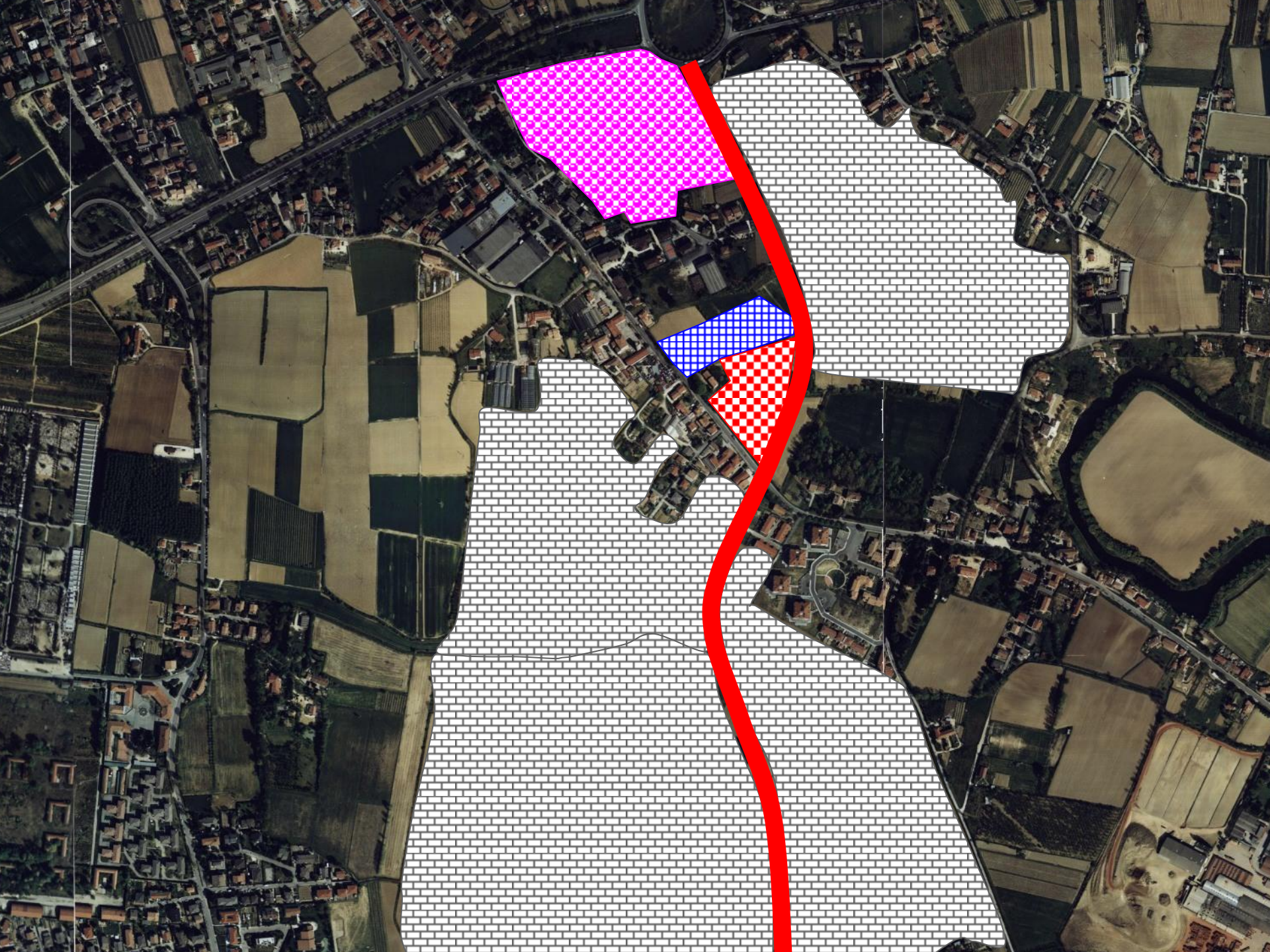
2 INCROCI A RASO

3 SOTTOPASSI/GALLERIE

DIVERSI ACCESSI DIRETTI



**I POTIZZABILI 10.000
MEZZI/GIORNO PER
SENSO DI MARCIA,
PARI A UN MEZZO
OGNI 2,1 SECONDI
NELLE 12 ORE**



Le osservazioni anche da parte di singoli cittadini
vanno indirizzate al
Responsabile Unico del Procedimento
Ing. Costantini
Responsabile Area Strategica e Sviluppo
di Veneto Strade SPA
Via Sansovino, 5
30173 Venezia Mestre

An aerial photograph of a rural landscape, likely in Italy, showing a patchwork of agricultural fields, a winding river, and small settlements. A prominent yellow rectangular box is overlaid in the center, containing the text 'SALVIAMO IL NOSTRO TERRITORIO' in bold red capital letters.

**SALVIAMO IL
NOSTRO
TERRITORIO**